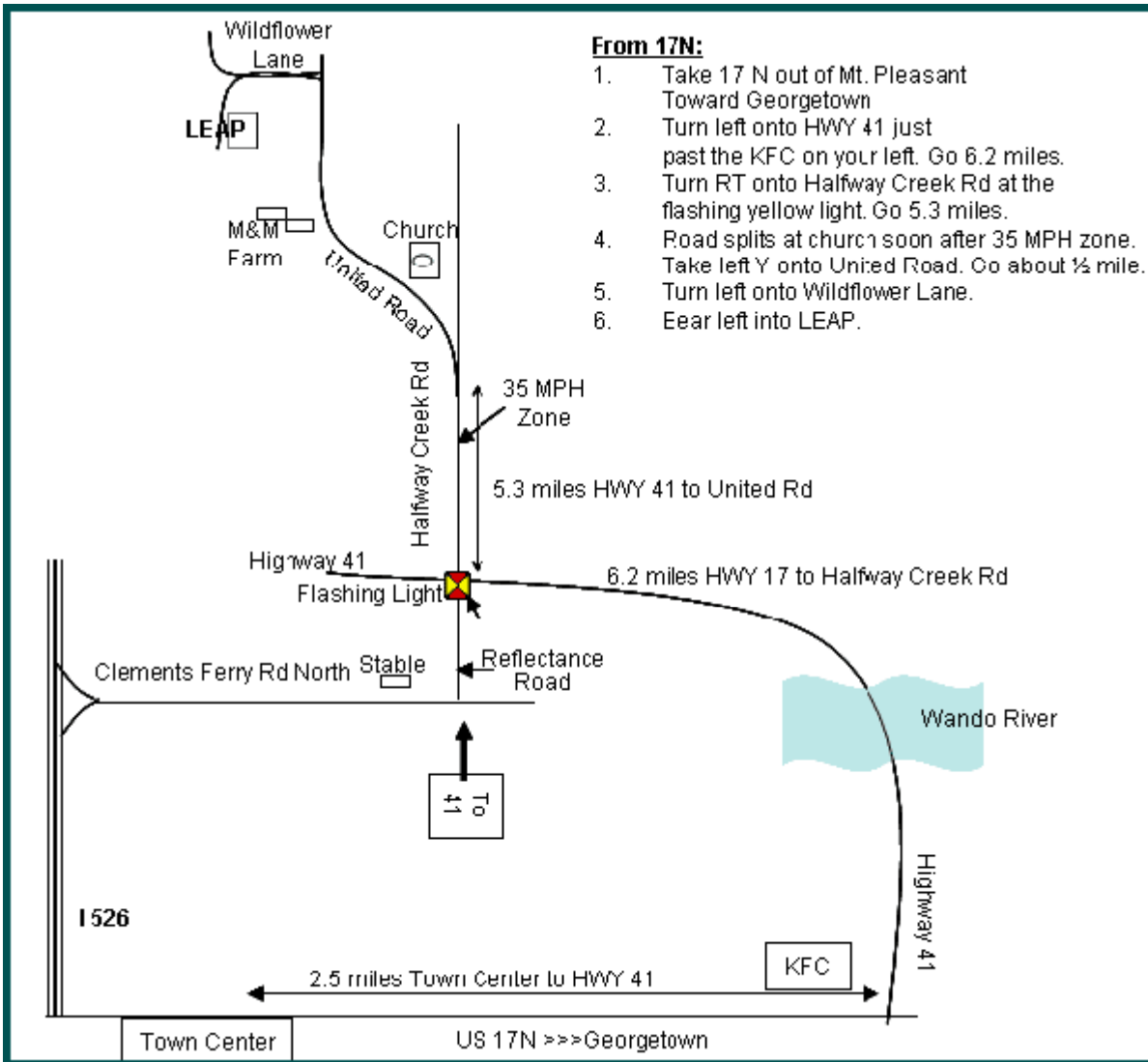


Directions to LEAP's Facility in Huger



From I-526:

- Take the Clements Ferry Rd. N exit
- Stay on Clements Ferry until you come to Reflectance Rd. (Look for “To 41” sign).
- At flashing light, go straight across Highway 41 onto Halfway Creek Rd.
- Go 5.3 miles. Road splits at church. Take left fork onto United Road.
- Go ½ mile. Turn left onto Wildflower Ln
- Bear left into LEAP.